

Who to contact

Sometimes it can be difficult to know who to contact at the LMC if you have a query, that's why we've created this 'Who to contact' list to help you get answers to your queries quickly.

Nottinghamshire 
Local Medical Committee

Representing and supporting GPs

General Queries

General queries for the LMC or LMC Buying Group

Email: office@nottslmc.co.uk

Email: info@lmcbuyinggroups.co.uk

Live Chat: www.lmcbuyinggroups.co.uk



Practice Specific or TRiM Queries

CQC Inspection prep, Premises advice & guidance, GP Contract advice and TRiM support.

Call: 0115 977 1341

Email: liaison@nottslmc.co.uk

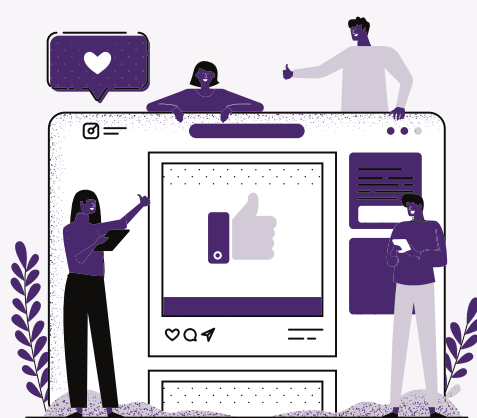


Communications & Events

Newsletters, Annual reports, Social media training, Podcast, Press relations, and more

Call: 0115 977 1341

Email: office@nottslmc.co.uk



Discounts

Supplier discounts, flu vaccines, and list of NHS discounts

Call: 0115 979 6910

Email: info@lmcbuyinggroups.co.uk

Live Chat: www.lmcbuyinggroups.co.uk



GP-S Queries

Peer to peer mentoring, coaching and signposting for GPs

Call: 0115 979 6917

Email: contact@gp-s.org

Website: www.gp-s.org



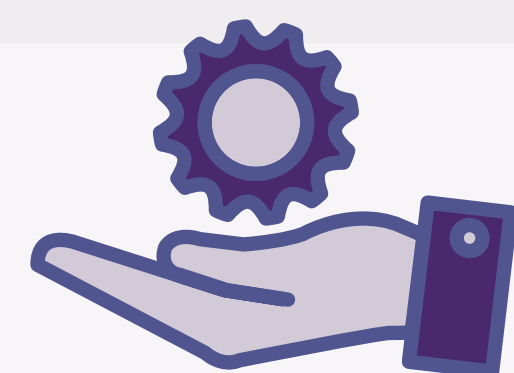
Phoenix Programme

Career development and workforce schemes

Call: 0115 979 6918

Email: info@phoenixprogramme.co.uk

Website: www.phoenixprogramme.co.uk



Personal Advice Support Service (PASS)

Personal and confidential support for GPs facing personal or professional difficulties

Call: 0115 977 1341

Email: office@nottslmc.co.uk



Vacancy Promotion Queries

Promote practice vacancies locally and nationally for clinical and non-clinical staff

Email: office@nottslmc.co.uk (Local)

Email: info@lmcbuyinggroups.co.uk (National)

